

LANDSCAPE PAINTINGS

2000–2024

ROD SHAW
ART & DESIGN

CONTENTS

Avon	1
Waterside	2
The Road to St Catherine	3
Cherry Trees in Blossom,Victoria Park, Bath.....	4
Cornwall & The Isles of Scilly	5
Ashore at Gillan Cove	6
Gillan Cove.....	7
Godrevy Lighthouse.....	7
Incoming Tide at Kynance Cove.....	8
Serpentine Rocks at Kynance Cove	8
Rock Pools at Kennack Sands I.....	9
Rock Pools at Kennack Sands II.....	9
Incoming Tide at Marazion I.....	10
Incoming Tide at Marazion II.....	10
Incoming Tide at Marazion III.....	11
View Towards Flushing Cove	11
Ashore on St Mary's Island, Isles of Scilly.....	12
Lobster Pot on the Beach, St Martin's, Isles of Scilly	12
The Road to St Mary's Sound, Isles of Scilly	13
View Towards Round Island from St Martin's	13
Evening View Across Broad Sound, The Isles of Scilly.....	14
Evening at The Garrison, St Mary's, The Isles of Scilly	14
Gathering Clouds, The Isles of Scilly	15
Agapanthuses in Juliet's Garden	16
View Towards Samson from Juliet's Garden	16
The Sea at Old Town St Mary's, The Isles of Scilly.....	17
Path onto the Beach, Tresco, The Isles of Scilly	17
Samson	18

Day 1: Evening on Marazion Beach.....	19
Day 2: Gillan Cove	19
Day 3: Sunset at Godrevy	19
Day 4: Kynance Cove	19
Day 5: Footpath from Carne to Manaccan.....	20
Day 6: View of St Michael's Mount from Tolver Dairy	20
Day 7: Kynance Cove from the Cliff	20
Day 8: Rising Tide at Gillan Cove	20
Day 9: Looking Out to Sea from The Herra	21
Day 10: Looking Out to Sea from Anchor Cottage.....	21
Day 11: Church Cove, The Lizard	21
Day 12: Rocks at Kennack Sands	22
Day 14: Sunset at Gillan Cove	22
Day 13: View of St Anthony from Gillan	22

Cumbria..... **23**

Winter Light, Tarn Hows	24
View Towards Tarn Hows.....	24
Tarn Hows	25
Flooded Path.....	25
St Michael's All Angels Church, Hawkshead	26
The Missing Gate	26
Evening Light, Alston Moor	27
Rose Bay Willow Herb.....	28
Crosthwaite Church.....	28
Mist Over Crummock Water	29
Snow at Hawkshead	29

Derbyshire..... **31**

Snow at Bretton	32
Snowed in at Bretton	32

Dawn at Bretton.....	33	Christmas Day at Beacon Hill	51
View from Bretton at Dusk.....	33	Snow at the Beacon	51
Dusk at Bretton.....	34	Snow at the Beacon on Christmas Day.....	52
Sunrise at Bretton.....	35	Pignut Spinney	52
Winter View from Mam Tor.....	35	Two Steps to the Top, Beacon Hill.....	53
View of Lose Hill from Mam Tor	36	Leaves Falling on The Permissive Path	54
Evening View, Edale.....	36	The Permissive Path in Autumn	54
Winter View from the Car Park at Mam Tor.....	36	Walking in the Woods in Autumn.....	55
Dry Stone Walls	37	Normanton Church at Rutland Water	56
A Wall with a View	37	Late Afternoon at Bradgate Park	57
Towards Gypsy Bank	38	View from Old John at Dusk, Bradgate Park.....	57
View from Curbar Edge.....	38	View of Loughborough from Beacon Hill	57
Mam Tor	39	Autumn at Barrow Slabs.....	58
Suffolk Latch at Calke Abbey.....	40	Norfolk.....	59
Greater London.....	41	Morning at Sheringham Beach	60
View Towards the London Eye from St James's Park.....	42	Evening at Sheringham Beach.....	60
Herefordshire & Worcestershire	43	Three Posts at Sheringham Beach.....	61
The Common, Eywas Harold.....	44	Shropshire.....	63
Evening Mist.....	45	Carding Mill Valley.....	64
Hay Bales Near Malvern	46	Tyne & Wear	65
Footpath to West Malvern	46	Rendezvous at Whitley Bay	66
View Towards West Malvern.....	47	Wiltshire.....	67
The Malverns I.....	47	Meadowsweet by the Side of the Road	68
The Malverns II.....	47	Scotland	69
The Malverns III.....	47	Sunset at Lochranza I-III	70
The Malverns in Winter.....	48	Sunset at Lochranza IV- V	70
Leicestershire & Rutland	49	Luskentyre Beach	71
Path Under Snow at Beacon Hill.....	50		
View Towards Charnwood Forest from Moat Road	50		

Ireland	73
Sunrise at Ros Muc, Connemara	74
Morning at Ros Muc, Connemara	74
Midday at Ros Muc, Connemara	75
Evening at Ros Muc, Connemara	75
The Twelve Bens, Ros Muc, Connemara I-II	76
The Twelve Bens, Ros Muc, Connemara III	76
Connemara	77
Sand Dunes at Magherabeg I.....	77
Sand Dunes at Magherabeg II.....	77
Towards the Beach at Magherabeg.....	77
Sundown, County Wicklow.....	78
France	79
The Road to Samoëns from Geneva.....	80
Lake Geneva.....	81
New Zealand	83
Kerekere Beach	84

Avon



Waterside

Oil on board 1989



The Road to St Catherine

Oil on canvas 2000



Cherry Trees in Blossom,Victoria Park, Bath

Oil on canvas (80 x 50cm) 1989 / 2023

Cornwall & The Isles of Scilly



Ashore at Gillan Cove

Oil on board (50 x 50cm) 2010



Gillan Cove

Oil on board (74 x 21cm) 2016

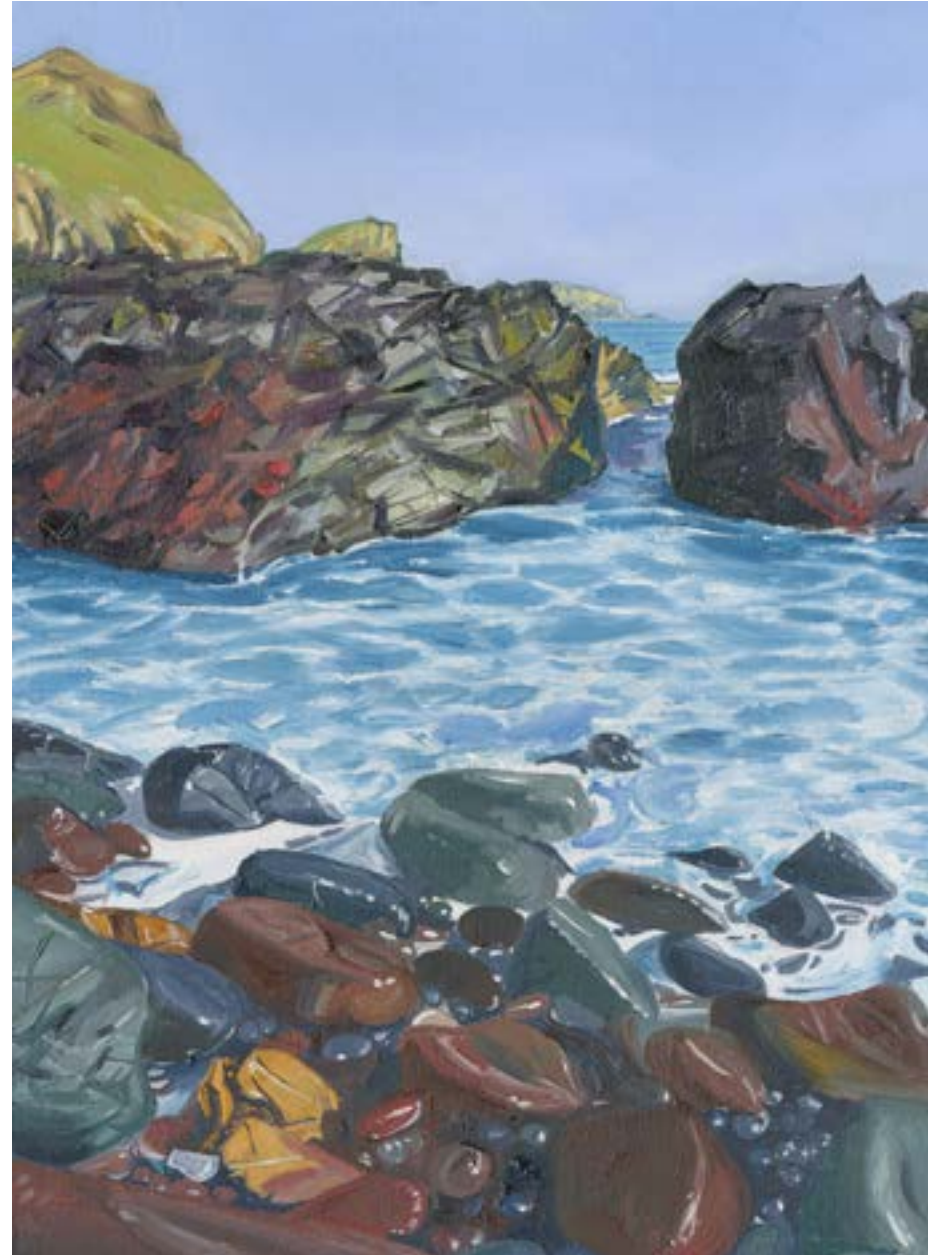


Godrevy Lighthouse

Oil on board (42 x 15cm) 2018



Incoming Tide at Kynance Cove
Oil on board (37x x 27cm) 2010



Serpentine Rocks at Kynance Cove
Oil on board (37x x 27cm) 2010



Rock Pools at Kennack Sands I
Oil on board (37x x 27cm) 2010



Rock Pools at Kennack Sands II
Oil on board (37x x 27cm) 2010

Cornwall & The Isles of Scilly



Incoming Tide at Marazion I
Oil on board (40 x 40cm) 2024



Incoming Tide at Marazion II
Oil on board (40 x 40cm) 2024



Incoming Tide at Marazion III
Oil on board (40 x 40cm) 2024



View Towards Flushing Cove
Oil on board (43 x 43cm) 2007

Cornwall & The Isles of Scilly



Ashore on St Mary's Island, Isles of Scilly

Oil on board (60 x 60cm) 2009



Lobster Pot on the Beach, St Martin's, Isles of Scilly

Oil on board (60 x 60cm) 2009



The Road to St Mary's Sound, Isles of Scilly

Oil on board (60 x 60cm) 2009



View Towards Round Island from St Martin's

Oil on board (60 x 60cm) 2009

Cornwall & The Isles of Scilly



Evening View Across Broad Sound, The Isles of Scilly

Oil on board (78 x 20cm) 2009



Evening at The Garrison, St Mary's, The Isles of Scilly

Oil on board (78 x 20cm) 2009



Gathering Clouds, The Isles of Scilly

Oil on board (78 x 20cm) 2009

Cornwall & The Isles of Scilly



**Agapanthuses in Juliet's Garden
View Towards Samson from Juliet's Garden
Scooting Towards the Sea on Bryher**

Oil on board (40 x 40cm) 2022





The Sea at Old Town St Mary's, The Isles of Scilly

Oil on board (40 x 40cm) 2022



Path onto the Beach, Tresco, The Isles of Scilly

Oil on board (40 x 40cm) 2022



Samson

Oil on board (50 x 33cm) 2024



Day 1: Evening on Marazion Beach



Day 3: Sunset at Godrevy



Day 2: Gillan Cove



Day 4: Kynance Cove

Oil on board (18 x 13cm) 1-14 2020

Cornwall – Lockdown sketches



Day 5: Footpath from Carne to Manaccan



Day 7: Kynance Cove from the Cliff



Day 6: View of St Michael's Mount from Tolver Dairy



Day 8: Rising Tide at Gillan Cove



Day 9: Looking Out to Sea from The Herra



Day 10: Looking Out to Sea from Anchor Cottage



Day 11: Church Cove, The Lizard

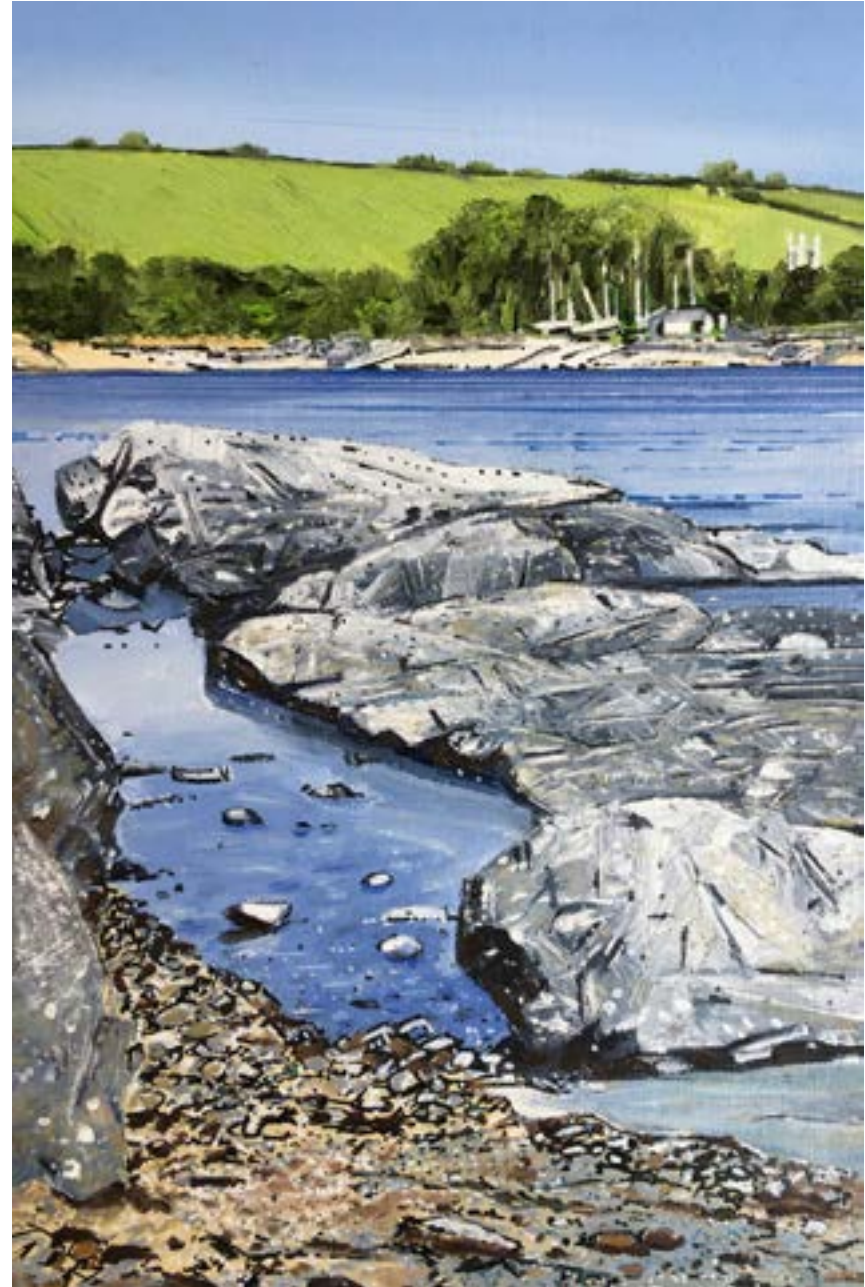
Cornwall – Lockdown sketches



Day 12: Rocks at Kennack Sands



Day 14: Sunset at Gillan Cove



Day 13: View of St Anthony from Gillan

Cumbria



Winter Light, Tarn Hows
Oil on board (33 x 33cm) 2008



View Towards Tarn Hows
Oil on board (80 x 80cm) 2016



Tarn Hows

Oil on board (88 x 58cm) 2021



Flooded Path

Oil on board (80 x 60cm) 2015



St Michael's All Angels Church, Hawkshead
Oil on board (33 x 33cm) 2008



The Missing Gate
Oil on board (33 x 33cm) 2008



Evening Light, Alston Moor

Oil on board (40 x 12.5cm) 2012



Rose Bay Willow Herb
Oil on board (25 x 20cm) 2012



Crosthwaite Church
Oil on board (80 x 40cm) 2012



Mist Over Crummock Water
Oil on board (33 x 33cm) 2009



Snow at Hawkshead
Oil on board (32 x 21cm) 2009

Derbyshire



Snow at Bretton
Oil on board (44 x 44cm) 2010



Snowed in at Bretton
Oil on board (33 x 33cm) 2010



Dawn at Bretton
Oil on board (60 x 60cm) 2015



View from Bretton at Dusk
Oil on board (60 x 60cm) 2015



Dusk at Bretton

Oil on board (53 x 39cm) 2010



Sunrise at Bretton

Oil on board (78 x 20cm) 2015



Winter View from Mam Tor

Oil on board (42 x 15cm) 2018



View of Lose Hill from Mam Tor
Oil on board (32 x 22cm) 2018



Winter View from the Car Park at Mam Tor
Oil on board (18 x 13cm) 2018



Evening View, Edale
Oil on board (18 x 13cm) 2018



Dry Stone Walls

Oil on board (33 x 33cm) 2010



A Wall with a View

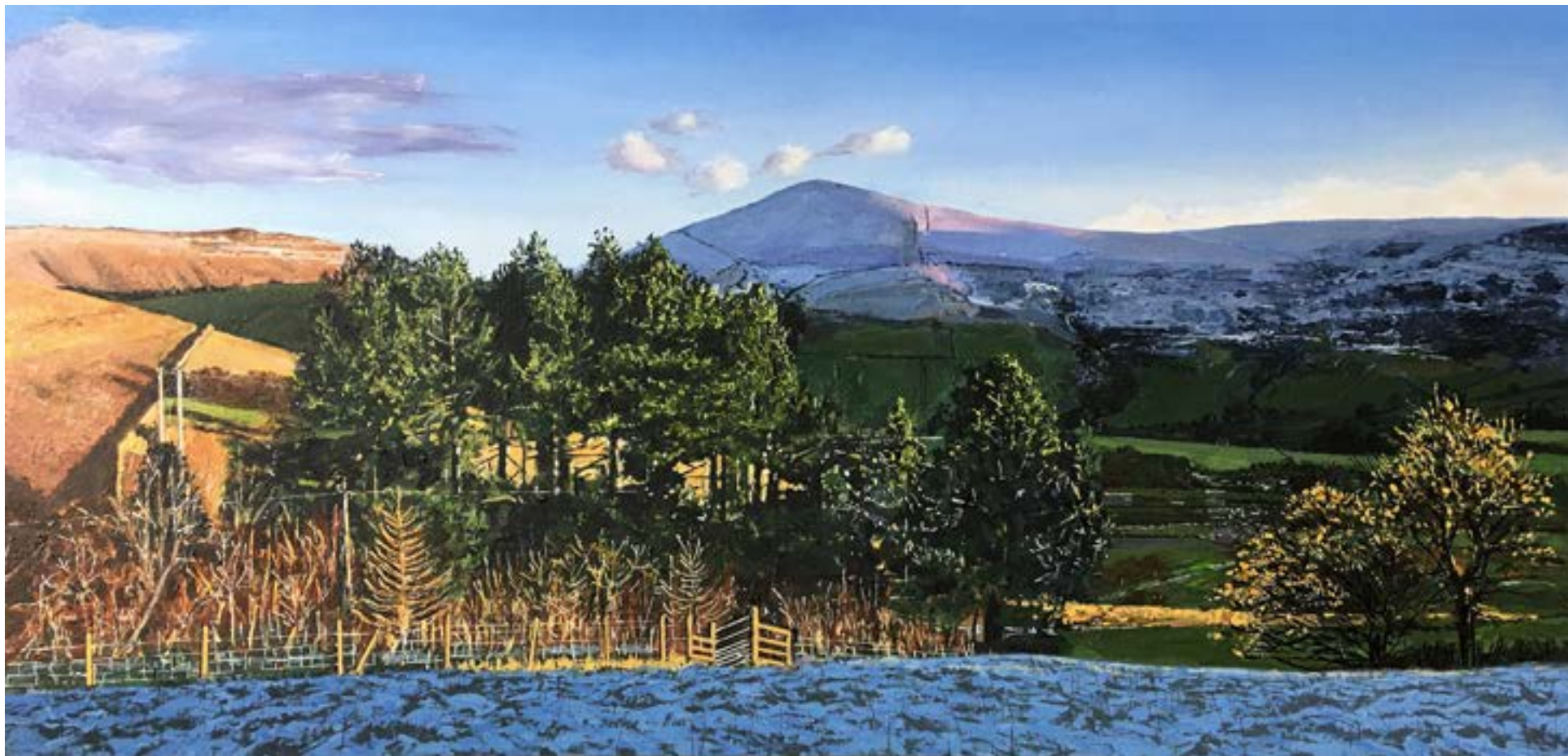
Oil on board (33 x 33cm) 2013



Towards Gypsy Bank
Oil on board (45 x 38cm) 2007



View from Curbar Edge
Oil on board (31 x 13cm) 2013



Mam Tor

Oil on board (71 x 34cm) 2024



Suffolk Latch at Calke Abbey
Oil on board (35.5 x 35.5cm) 2017

Greater London



View Towards the London Eye from St James's Park

Oil on board (80 x 40cm) 2017

Herefordshire & Worcestershire



The Common, Eywas Harold
Oil on board (100 x 50cm) 2004



Evening Mist

Oil on board (115 x 50cm) 2015



Hay Bales Near Malvern

Oil on board (60 x 33cm) 2014



Footpath to West Malvern

Oil on board (42.5 x 35.5cm) 2012



View Towards West Malvern

Oil on board (41.5 x 10.5cm) 2012



The Malverns I

Oil on board (18 x 13cm) 2006



The Malverns II

Oil on board (18 x 13cm) 2006



The Malverns III

Oil on board (18 x 13cm) 2006



The Malverns in Winter
Oil on board (60 x 22cm) 2012

Leicestershire & Rutland

Leicestershire & Rutland



Path Under Snow at Beacon Hill

Oil on board (60 x 60cm) 2015



View Towards Charnwood Forest from Moat Road

Oil on board (60 x 60cm) 2015



Christmas Day at Beacon Hill
Oil on board (150 x 40cm) 2012

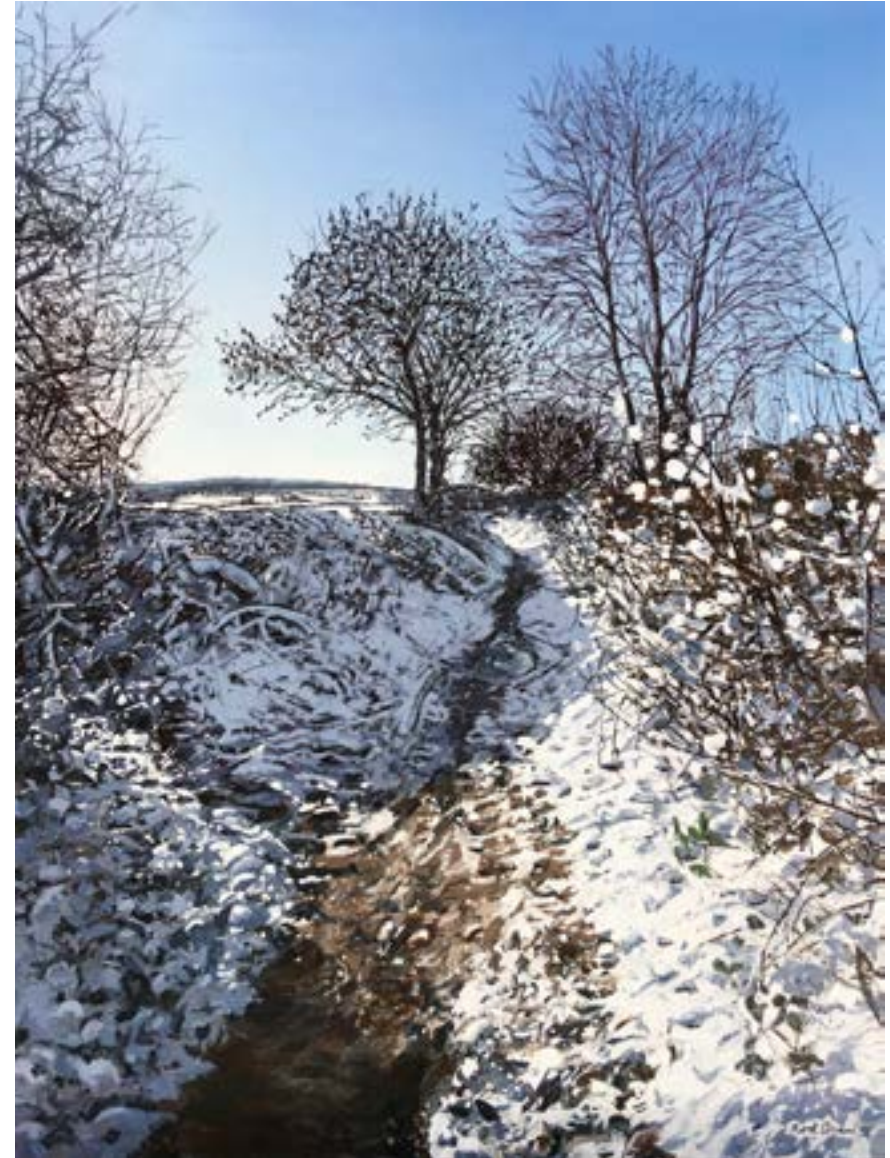


Snow at the Beacon
Oil on board (150 x 40cm) 2013



Snow at the Beacon on Christmas Day

Oil on board (33 x 33cm) 2018



Pignut Spinney

Oil on board (48 x 36cm) 2023



Two Steps to the Top, Beacon Hill

Oil on board (110 x 50cm) 2021



Leaves Falling on The Permissive Path
Oil on board (80 x 60cm) 2015



The Permissive Path in Autumn
Oil on board (80 x 60cm) 2015



Walking in the Woods in Autumn

Oil on board (53 x 37cm) 2020



Normanton Church at Rutland Water

Oil on board (50 x 30cm) 2020



Late Afternoon at Bradgate Park
Oil on board (38 x 28cm) 2010



View of Loughborough from Beacon Hill
Oil on board (30 x 25cm) 2009



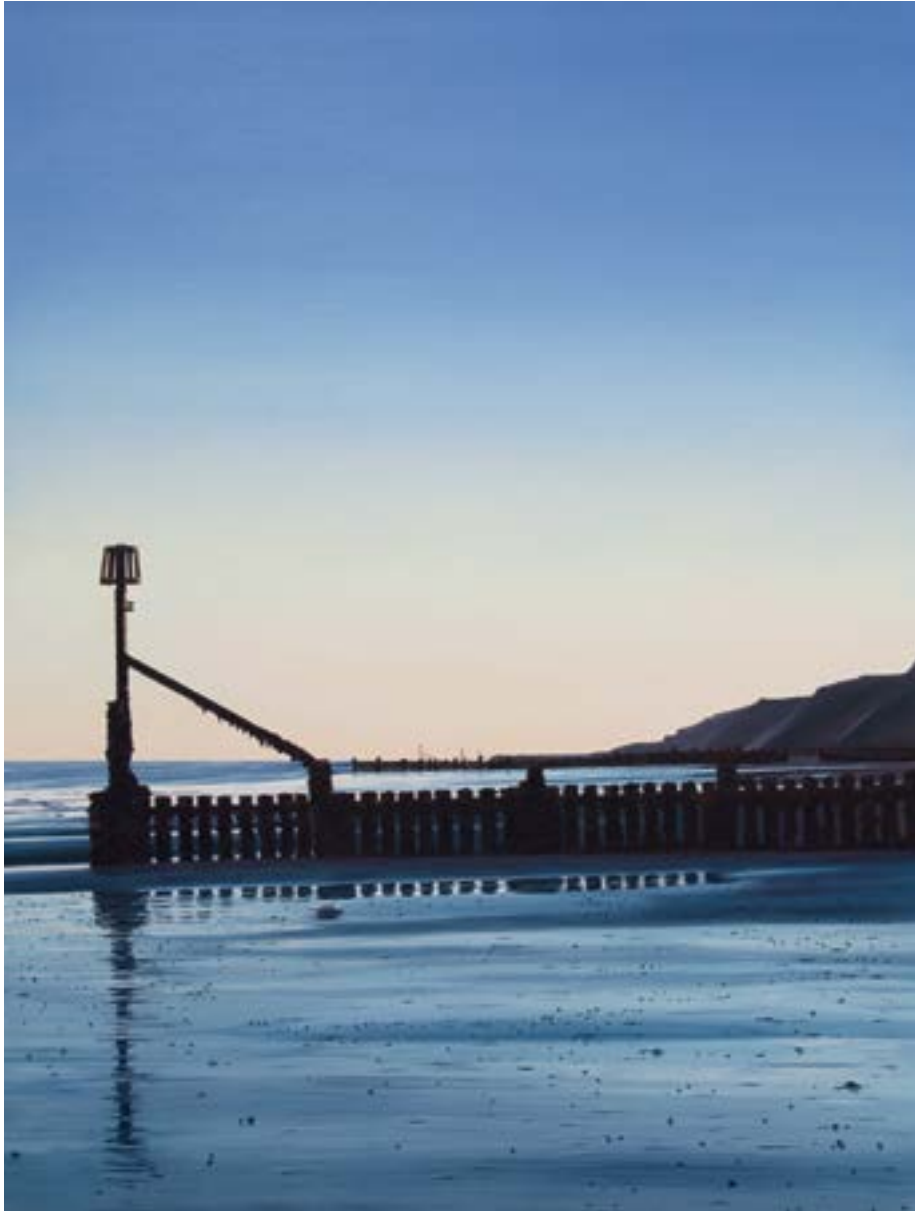
View from Old John at Dusk, Bradgate Park
Oil on board (42 x 13cm) 2009



Autumn at Barrow Slabs

Oil on board 1989

Norfolk



Morning at Sheringham Beach
Oil on board (80 x 60cm) 2015



Evening at Sheringham Beach
Oil on board (80 x 60cm) 2015



Three Posts at Sheringham Beach

Oil on board (80 x 60cm) 2015

Shropshire



Carding Mill Valley

Oil on board (53 x 44cm) 2002

Tyne & Wear



Rendezvous at Whitley Bay
Oil on board (78 x 20cm) 2019

Wiltshire



Meadowsweet by the Side of the Road

Oil on board (29 x 17cm) 2017

Scotland

Scotland



Sunset at Lochranza I-III

(Above)

Sunset at Lochranza IV- V

(Left)

Oil on board (32 x 32cm) 2015



Luskentyre Beach

Oil on board (80 x 60cm) 2015

Ireland



Sunrise at Ros Muc, Connemara
Oil on board (61 x 19cm) 2009



Morning at Ros Muc, Connemara
Oil on board (61 x 19cm) 2009



Midday at Ros Muc, Connemara
Oil on board (61 x 19cm) 2009



Evening at Ros Muc, Connemara
Oil on board (61 x 19cm) 2009



The Twelve Bens, Ros Muc, Connemara I-II
(Above)

The Twelve Bens, Ros Muc, Connemara III
(Left)

Oil on board (18 x 13cm) 2009



Connemara

Oil on board (100 x 30cm) 2015



Sand Dunes at Magherabeg I
Oil on board (18 x 13cm) 2009



Sand Dunes at Magherabeg II
Oil on board (18 x 13cm) 2009



Towards the Beach at Magherabeg
Oil on board (18 x 13cm) 2009



Sundown, County Wicklow
Oil on board (51 x 31cm) 2009

France



The Road to Samoëns from Geneva

Oil on board (50 x 23cm) 2008



Lake Geneva

Oil on board (52 x 22cm) 2022

New Zealand



Kerekere Beach

Oil on board (22 x 13cm) 2020

Rod Shaw

Born in South Yorkshire in 1962, I grew up in the English Midlands and studied at Loughborough College of Art and Design before moving to the North East to specialize in Fine Art at Newcastle University.

Since then, I have worked as a designer and illustrator for the Water, Engineering and Development Centre at Loughborough University for over thirty-five years. Here, I have also designed and illustrated publications for international agencies including the World Health Organization (WHO), The International Federation of Red Cross and Red Crescent Societies (IFRC) and the Bill & Melinda Gates Foundation.

By contrast, having a passion for the beauty of the natural world in all seasons, I return to my roots and turn to landscapes as a source of inspiration for drawing and painting. Touring Britain and Ireland over many years I still find endless possibilities for painting the land and sea – exploring the way in which both are transformed by the fleeting effects of light and weather, using a variety of formats and compositions.

I also look to still lifes and natural forms to study how light can dramatically change the nature of simple objects in the same way it can affect the experience of the landscape.

Prints and greeting cards

Giclée prints are generated from high-resolution digital scans and printed with archival quality inks onto acid-free 310gsm fine art paper. The inks used are UV resistant pigment based inks. Each print is treated with a specialist coating which provides further resistance to UV and moisture. The prints are usually supplied unmounted, but special arrangements can be made for mounting.

Greeting cards are blank inside and supplied with white envelopes.

Sales of original works: For enquiries regarding sales, commissions and exhibitions, please contact me on 07742 208504 or email rod.shaw.art@icloud.com

Contact details

Rod Shaw
87 Beacon Road
Loughborough
Leicestershire LE11 2BG
United Kingdom

T: 07742 208504
E: rod.shaw.art@icloud.com
W: <http://www.rod-shaw.co.uk>





ROD SHAW
ART & DESIGN